



DERMATOLOGY / PLASTIC SURGERY

WOUND CARE

OTOLARYNGOLOGY



why buy
from mti?



- 44 Years of Medical Manufacturing Experience
- 72 Specialized Medical Products
- Durable, All-Steel Frames
- Quieter & Stronger DC Motors
- Efficient Exams with Programmability
- Fewer Adjustments with Floating Arms
- Simple & Comfortable Articulating Headrests
- Easy Repair & Replacement with Removable Upholstery
- Infection Control with Seamless Upholstery
- Reduce Injuries with Mobile & Swivel Bases
- Limitless Customizations with Add-On Accessories
- Custom Cabinets with 2 Million Configurations

430 SERIES

- **Motors:** power lift, back, tilt & foot
- **Height:** 19-30.5" or 21-37"
- **Width:** 20", 22" or 24"
- **Backrest:** square or tapered
- **Weight Capacity:** 650 lbs.
- **Controls:** foot control, hand control or back switches
- **Memory Positions:** 4 user-programmable positions
- **Headrest:** articulating
- **Velcro Upholstery:** smooth or plush
- **Legrest:** knee-break w/o extension
- **Optional Patient/IV Arms:** floating, seat rail or back rail
- **Base:** standard, optional 340° swivel or mobile
- **Frame:** all-steel
- **Safety Standards:** UL 60601-1, CAN/CSA C22.2 No. 601.1-M90, IEC 60601-1

450/450W SERIES

- **Motors:** power lift, back, tilt & foot
- **Height:** 19-30.5" or 21-37"
- **Width:** 24" or 30" Bariatric
- **Backrest:** tapered
- **Weight Capacity:** 650 & 800 lbs.
- **Controls:** foot control or optional hand control
- **Memory Positions:** 4 user-programmable positions
- **Headrest:** rectangular articulating
- **Velcro Upholstery:** seamless or designer
- **Legrest:** knee-break w/extension
- **Optional Patient/IV Arms:** floating, seat rail or back rail
- **Base:** standard, optional 340° swivel or mobile
- **Frame:** all-steel
- **Safety Standards:** UL 60601-1, CAN/CSA C22.2 No. 601.1-M90, IEC 60601-1

424/423/421 SERIES

- **Motors:** power lift, tilt or back w/coordinated foot
- **Height:** 19-30.5" or 21-37"
- **Width:** 19.5"
- **Backrest:** tapered
- **Weight Capacity:** 650 lbs.
- **Controls:** back switches or optional foot control
- **Memory Positions:** 2 user-programmable positions
- **Headrest:** articulating
- **Velcro Upholstery:** smooth or plush
- **Footrest:** flip-up
- **Arms:** flip-up
- **Base:** 340° swivel
- **Frame:** all-steel
- **Safety Standards:** UL 60601-1, CAN/CSA C22.2 No. 601.1-M90, IEC 60601-1

mti.net or 800-924-4655

PODIATRY



527/527W SERIES

- **Motors:** power lift, back & tilt
- **Height:** 19-38.7"
- **Width:** 24.5" or 30" Bariatric
- **Backrest:** tapered
- **Weight Capacity:** 650 or 800 lbs.
- **Controls:** foot control or hand control
- **Memory Positions:** Rapid or 2 user-programmable positions
- **Headrest:** built-in contour
- **Velcro Upholstery:** seamless or designer
- **Legrest:** non knee-break w/foot extension
- **Patient Arms:** removable, floating slide-back
- **Base:** standard, optional 340° swivel or mobile
- **Frame:** all-steel
- **Safety Standards:** UL 60601-1, CAN/CSA C22.2 No. 601.1-M90, IEC 60601-1

ORAL SURGERY



721 SERIES

- **Motors:** power lift, back, & tilt
- **Height:** 19-35"
- **Width:** 21.25"
- **Backrest:** tapered
- **Weight Capacity:** 650 lbs.
- **Controls:** foot control or hand control
- **Memory Positions:** 2 user-programmable positions
- **Headrest:** articulating
- **Velcro Upholstery:** smooth or designer
- **Legrest:** non knee-break contour
- **Optional Patient/IV Arms:** floating, seat rail or back rail
- **Base:** standard, optional 340° swivel or mobile
- **Frame:** all-steel
- **Safety Standards:** UL 60601-1, CAN/CSA C22.2 No. 601.1-M90, IEC 60601-1

OPHTHALMOLOGY



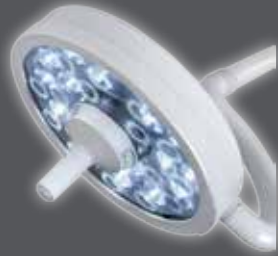
440 SERIES

- **Motors:** lithium ion battery & 115/230 outlet power lift, back, tilt or foot
- **Height:** 20-31.5" or 22-38"
- **Width:** 24"
- **Backrest:** tapered
- **Weight Capacity:** 650 lbs.
- **Controls:** hand control or optional foot control
- **Memory Positions:** 4 user-programmable positions
- **Headrest:** articulating (wrist supports available)
- **Velcro Upholstery:** ultra-thin smooth w/memory foam
- **Legrest:** knee-break w/o extension
- **Optional Patient/IV Arms:** floating, bed rail or seat rail
- **Base:** mobile
- **Frame:** all-steel
- **Safety Standards:** UL 60601-1, CAN/CSA C22.2 No. 601.1-M90, IEC 60601-1

OTHER PRODUCTS

LIGHTS

- **Types of Lights:** 14
- **Style:** LED or Halogen
- **Lux:** 24,000 - 130,000
- **Life:** 2,000 - 70,000
- **CRI:** ≤ 75 - 97
- **Mount:** ceiling, wall or floor



CABINETS

- **Types of Cabinets:** 9
- **Style:** ENT or Medical
- **Height:** 33.5 - 41.5"
- **Width:** 24-35"
- **Drawers:** 2-6
- **Finish:** laminate or stainless steel
- **Counter:** laminate or solid



STOOLS

- **Types of Stools:** 12
- **Controls:** hand or foot
- **Height:** 18.25-28.75"
- **Width:** 16.5"
- **Backrest:** none, ergo, curved body or twin arms
- **Weight Capacity:** 300-350 lbs.



SIDE CHAIRS

- **Types of Chairs:** 2
- **Seat Height:** 17.75"
- **Seat Width:** 18.4"
- **Backrest:** ergonomic
- **Weight Capacity:** 425 lbs.
- **Arms:** none or twin

