

A close-up photograph of a light-colored, possibly beige or cream, office chair. The image shows the backrest, headrest, and part of the seat. The chair has a smooth, leather-like texture and visible stitching. The background is a light blue gradient with a dark blue diagonal shape in the bottom right corner.

G2

Upholstery

Color Selections



Designed to improve the patient experience.

Choose comfort for your practice with our innovative upholstery options, crafted to inspire your imagination and transform office spaces. MTI's materials seamlessly blend aesthetics and longevity, allowing you to create new possibilities and rethink the relationship between design and functionality.

Premium Upholstery

Our Premium Upholstery features an aesthetically pleasing design that is exceptionally comfortable, even during long procedures. It is also extremely durable, ensuring longevity and reliability.



Taupe
215

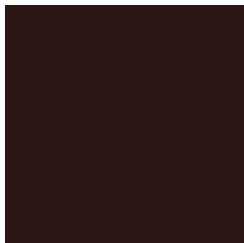


Gunmetal
218



Mocha
237

Premium
Touch Sample



Burgundy
238



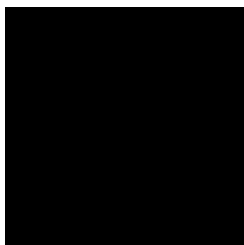
Blue Ridge
221



Midnight Blue
239



Blue Ridge
221



Black
217



Slate
250



Dove
241

Blending performance, comfort, and sustainability.

Our products prioritize comfort, high-wear durability, and earth-friendly innovation. They are free of PFAS and can be easily disinfected with most sanitizing products, ensuring a safe and sustainable choice for your design projects.

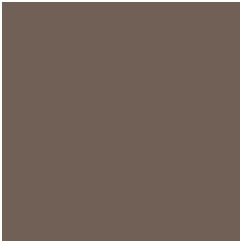
Ultraleather® Upholstery

Ultraleather Upholstery is PVC-free and made from a soft-touch material with high-strength fibers. It is thoughtfully crafted for a more luxurious look, combining elegance with durability.

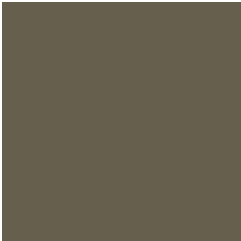
Ultraleather™
Touch Sample



Arctic
242



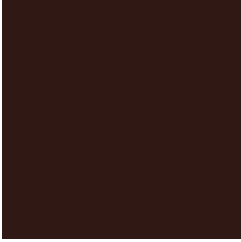
Papyrus
223



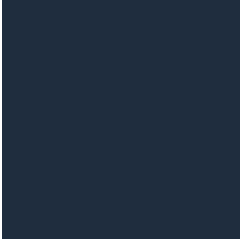
Pine Cone
243



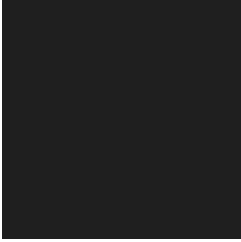
Papyrus
223



Garnet
244



Diplomat Blue
236



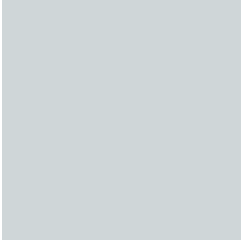
Raven Wing
225



Schooner
226



Dove Grey
245



Silver Pearl
246

Specifications

Additional specifications can be provided by contacting [MTI's customer service department](#). MTI selected upholstery meets a broad range of regulations; however, your local regulations may vary from generally accepted regulations. It is the customer's responsibility to order products which meet their requirements. Colors in this brochure are as closely represented as possible. However, due to varying monitors, printed material, and dye lots, the nature of the actual products may differ slightly from how they appear.

Cleaning & Disinfecting

MTI's standard policy on disinfecting medical equipment is to use a solution with a 10% sodium hypochlorite (bleach) and 90% water (1:10 ratio) however please see current CDC guidelines for Disinfection and Sterilization in Healthcare Facilities for more specific information. For premixed disinfectant options, see MTI Suggested Disinfectants Policy downloadable at www.mti.net/DisinfectantsPolicy

Ordering

For more information or to request a quote, contact MTI. Call us at (800) 924-4655 (US & Canada) or (801) 875-4999 (International), email us at sales@mti.net or visit us at www.mti.net.

MTI, Inc.
3655 W. Ninigret Drive • Salt Lake City, Utah, 84104-6572
Phone: 800-924-4655 • 801-875-4999 • Fax 801-952-0548
www.mti.net



**Specialized Equipment
for Speciality Healthcare**
Medical Technology Industries