



Strength in patient care™

TC SERIES ENT TREATMENT CABINETS





MTI HISTORY

When Jeff Baker founded Medical Technology Industries, Inc. (MTI), he had already worked in the healthcare field for over 26 years. His time as vice president of The HealthChair® Group's DMI® medical division, and years of experience in PDM®, The HealthChair® Group's podiatry division, prepared him for his new venture as he launched MTI in 1999.

Armed with the knowledge of his customers' needs and desires, Baker founded MTI to manufacture high-quality patient and physician seating, cabinetry, and lighting, along with other accessories. MTI designed its first podiatry chair the same year the company was founded, followed by a complete line of cabinets and examination chairs for otolaryngology.

MTI's success and rapid growth led to the construction in 2005 of a technology rich 50,000 square foot manufacturing facility, now expanded to 60,000 square feet. The building includes green technology, including computer controlled high efficiency cooling and heating systems, low-E glass windows, central plenum ceilings, and additional wall and ceiling insulation.

Always looking to the future, MTI is committed to continually producing high-quality and competitively priced products while remaining dedicated to customers, associates, and the community. MTI strives to remain at the forefront of the industry by employing qualified and well-trained associates, listening to customers' needs and desires, and never losing the thirst for success.



MTI TC SERIES TREATMENT CABINETS

**SIMPLIFY
DELIVERY OF CARE**
WITH A CUSTOM CABINET
CONFIGURATION
COUPLED WITH AN MTI CHAIR
TAILORED TO MEET YOUR NEEDS

Rugged construction combined with premium materials and contemporary ergonomic engineering help make the MTI TC Series Treatment Cabinets the finest on the market today.

All MTI cabinets are latex safe (latex-free) to reduce the possibility of allergic reactions.

MTI TC Series Treatment Cabinets are offered in five basic models with over a million standard option combinations to satisfy every possible need.



MTI 464 Procedure/Exam Chair with
TC100C Cabinet in Xanadu

Cabinet Comparison



	TC100A	TC100B	TC100C	TC100D	TC75
Style	Sit-down	Stand-up	Sit-down	Stand-up	Sit-down
Height	33.5"	41.5"	33.5"	41.5"	33"
Depth Options	18" or 21"	18" or 21"	21"	21"	18" or 21"
Drawers	5	6	5	6	5
Doors	2	2	3	3	2
Width	25"	25"	35.5"	35.5"	25"
Canister Options	3" x 5" and 4" x 5"	3" x 5" and 4" x 5"	3" x 5" and 4" x 5"	3" x 5" and 4" x 5"	3" x 5" and 4" x 5"
Backwall Options	15" or 4"	15" or 4"	15" or 4"	15" or 4"	15" or 4"
Glassware Options	Up to 4 Atomizer, Powder Blower, Syringe, and Others	Up to 4 Atomizer, Powder Blower, Syringe, and Others	Up to 4 Atomizer, Powder Blower, Syringe, and Others	Up to 4 Atomizer, Powder Blower, Syringe, and Others	Up to 4 Atomizer, Powder Blower, Syringe, and Others
Pressure Systems	Internal or Central Pressure	Internal or Central Pressure	Internal or Central Pressure	Internal or Central Pressure	Internal Pressure
Vacuum Systems	Standard or High Volume Internal Vacuum or Central Vacuum	Standard or High Volume Internal Vacuum or Central Vacuum	Standard or High Volume Internal Vacuum or Central Vacuum	Standard or High Volume Internal Vacuum or Central Vacuum	Standard or High Volume Internal Vacuum
Instrument Handle Options	Counter Top Recessed Cordless Side Mounted Cordless Side Mounted Corded	Counter Top Recessed Cordless Side Mounted Cordless Side Mounted Corded	Counter Top Recessed Cordless Side Mounted Cordless Side Mounted Corded	Counter Top Recessed Cordless Side Mounted Cordless Side Mounted Corded	Counter Top Recessed Cordless Side Mounted Cordless Side Mounted Corded
Instrument Options	Otosopes Macroview Transilluminators Insufflator Bulbs	Otosopes Macroview Transilluminators Insufflator Bulbs	Otosopes Macroview Transilluminators Insufflator Bulbs	Otosopes Macroview Transilluminators Insufflator Bulbs	Otosopes Macroview Transilluminators Insufflator Bulbs
Finish Options	Laminate or Stainless Steel	Laminate or Stainless Steel	Laminate or Stainless Steel	Laminate or Stainless Steel	Crystal Laminate
Counter top Options	Laminate or Solid Surface	Laminate or Solid Surface	Laminate or Solid Surface	Laminate or Solid Surface	Crystal Laminate
Hoses Location Options	Left or Right Hand	Left or Right Hand	Left or Right Hand	Left or Right Hand	Left or Right Hand
Waste Drop	No	No	Yes	Yes	No
More Details	pg. 6	pg. 6	pg. 7	pg. 7	pg. 12

TC100 TREATMENT CABINET STANDARD FEATURES

- Industrial rated pressure and vacuum system
- Control panel with easy to use single switch vacuum/pressure operation and auxiliary switch control
- Five drawers, one with adjustable dividers and two with molded inserts. All drawers have a self closure feature and drawer fronts use rugged 3 mm molded edge banding for cleanliness and durability.
- Rounded and molded side panels and edges offer style and functional safety as well as noise attenuation
- Concealed heavy-duty door hinges
- Dual accessory electrical outlets located inside cabinet
- Lower cabinet bumper for safety and retention of cabinet beauty
- Total component modularity with plug and play components aid in easy component replacement/repair
- Latex safe (latex-free)
- The TC100C and TC100D add a waste drop hole to aid in the safe sterile disposal of waste.
- Configure your counter top with two 3" x 6" (7.6 cm x 15.2 cm) stainless steel canisters or one 4" x 5" (10.2 cm x 12.7 cm) and one 3" x 6" (7.6 cm x 15.2 cm) stainless steel canisters.
- Configure your counter top with up to four small application bottles or up to three small application bottles and one syringe.
- Dual rechargeable instrument wells or transformer with corded handles
- Choice of two instrument heads
- Choice of Solid, Pattern, or Wood Grain laminate colors and crystal or black counter top and backwall or upgrade to a solid surface counter top. Optionally upgrade to a stainless steel exterior. See page 8 for color options. Special colors are available.
- Right or left hand hose dexterity
- Many other additional options



TC100A

The TC100A cabinet is MTI's five-drawer sit-down treatment cabinet. It is available in two cabinet depths; 18" (45.7 cm) Slim Line and 21" (53.3 cm) Standard.



TC100B

The TC100B cabinet is a stand-up version of the TC100A. The TC100B model adds an extra 7.5" drawer to provide extended height for those who prefer to stand during operation. It is available in two cabinet depths; 18" (45.7 cm) Slim Line and 21" (53.3 cm) Standard.





TC100C

The TC100C cabinet is a wider version of the TC100A. The extended width of the TC100C adds 10.5" of counter top space with a waste drop hole and a side mounted storage compartment, with one adjustable shelf and can house a waste receptacle. Optionally, the waste drop hole may be eliminated for additional bulk storage. It is available in a cabinet depth of 21" (53.3 cm).



TC100D

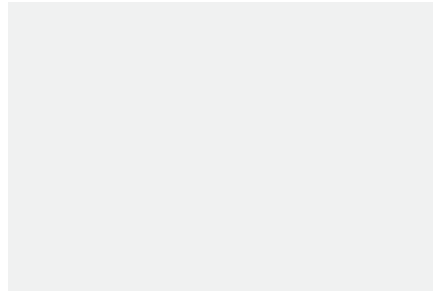
The largest of all treatment cabinets, the TC100D combines the larger work space and waste drop hole of the TC100C cabinet with the extended height of the TC100B for the ultimate in treatment cabinet size. The TC100D is standard with two adjustable shelves in the bulk storage compartment and can house a waste receptacle. Optionally, the waste drop hole may be eliminated for additional bulk storage. It is available in a cabinet depth of 21" (53.3 cm).

TC100 CABINET FINISHES

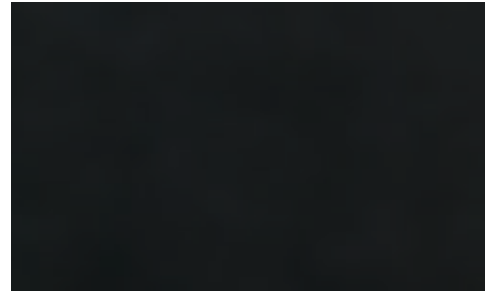
Counter Top Color Options¹



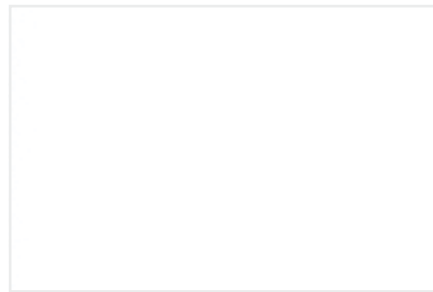
Brush Finished Satin Nickel Handles



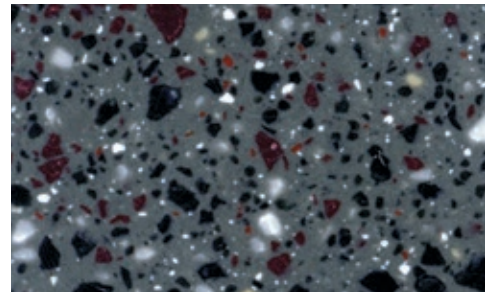
Crystal Laminate



Black Laminate



Frosty White Solid Surface²

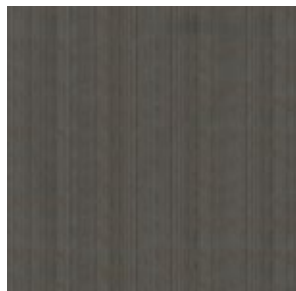


Midnight Melange Solid Surface²

Door and Drawer Front Standard Color Options¹



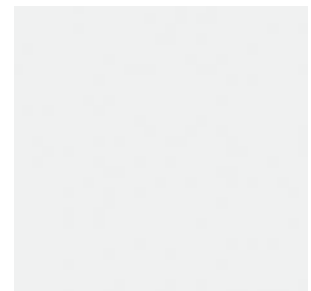
Xanadu³



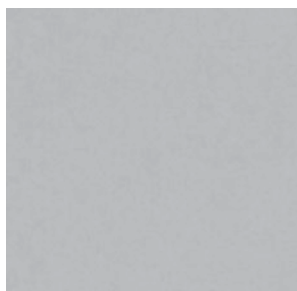
Low Line³



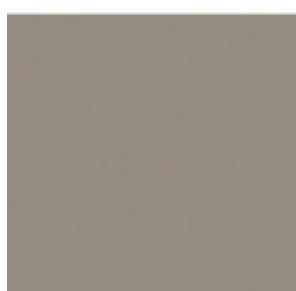
Classic Linen



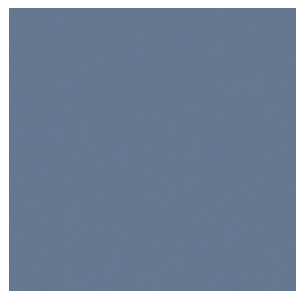
Crystal



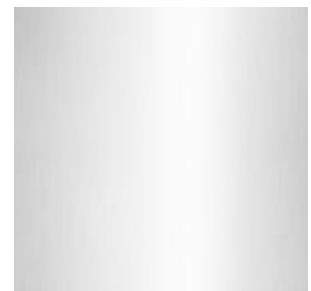
Dove Grey



Shadow



Brittany Blue



Stainless Steel^{2,4}
(includes cabinet sides)

¹Note: Due to printing processes, actual colors will vary.

²Additional upgrade charges apply

³Only available in Standard Depth cabinets. Includes cabinet sides and backwall.

⁴Includes cabinet sides

TC100 CABINET OPTIONS

Dexterity



Left-hand Hoses



Right-hand Hoses

Pressure and Vacuum Systems



Internal Pressure and Vacuum System



Internal Pressure and High-Volume Vacuum System



Central Pressure and Vacuum System
(connect rear of cabinet to central systems)



Vacuum Unloading System (quickly relieves vacuum pressure while using small instrument tips during rapid and repetitive on/off operation of the vacuum system)

Instrument Handles



Counter Top Recessed Handles and Charger



Side Mounted Handles and Charger



Side Mounted Corded Handles

Counter Top Configurations

Configure your counter top with two canisters or one 4" x 5" and one 3" x 6" canisters and up to four small application bottles or up to three small application bottles and one syringe.



One application bottle



Two application bottles



Three application bottles



Four application bottles



Three application bottles and one syringe

Backwalls



4" (10.2 cm) Backwall



15" (38.1 cm) Backwall with Stainless Steel Shelf



15" (38.1 cm) Backwall with Bottle/Canister Tower



15" (38.1 cm) Backwall with Glove and Tissue Dispensers



15" (38.1 cm) Backwall Medicine Lock Box with adjustable shelf



Mirror Warmers



Counter Top Recessed Glass Bead Mirror Warmer



Backwall Mounted Glass Bead Mirror Warmer (right side only)



Mirror Warming Drawer

Additional Options



Lift-up Shelf (12" x 12" or 12" x 18") (30.5 cm x 30.5 cm or 30.5 cm x 45.7 cm)



Lock one drawer or one door



Locks all drawers except one of either top drawers



Dirty Instrument Tray



Foot Control with Pressure and Vacuum Operation



Endoscope Cold Storage Tubes (Multiple sizes and mountings)



4-Port LED Light Source



Dual Suction Hoses provides access to suction on both sides of the cabinet



TC75 TREATMENT CABINET STANDARD FEATURES

The TC75 cabinet is ideal for satellite offices or those physicians who do not need handles and instruments, canisters, and bottles, but still need a quality cabinet with a suction and pressure systems.

- Crystal laminate color
- Choice of Standard 21" (53.3 cm) depth or Slim Line 18" (45.7 cm) depth models and 4" (10.2 cm) backwall
- Industrial rated pressure and vacuum system
- Control panel with easy to use single switch vacuum/pressure operation and auxiliary switch control
- Five drawers, one with adjustable dividers and two with molded inserts. All drawers have a self closure feature and drawer fronts use rugged 3 mm molded edge banding for cleanliness and durability.
- Rounded and molded side panels and edges offer style and functional safety as well as noise attenuation
- Concealed heavy-duty door hinges
- Dual accessory electrical outlets located inside cabinet
- Total component modularity with plug and play components aid in easy component replacement/repair
- Latex safe (latex-free)
- Right or left hand hose dexterity



Optional

- Configure your counter top with two 3" x 6" (7.6 cm x 15.2 cm) stainless steel canisters or one 4" x 5" (10.2 cm x 12.7 cm) and one 3" x 6" (7.6 cm x 15.2 cm) stainless steel canisters.
- Configure your counter top with up to four small application bottles or up to three small application bottles and one syringe.
- Dual rechargeable instrument wells or transformer with corded handles
- Choice of two instrument heads



3655 West Ninigret Drive, Salt Lake City, Utah 84104 USA
(800) 924-4655 • +1 (801) 875-4999 • Fax (801) 952-0548
www.mti.net

Strength in Patient Care™

© MTI All rights reserved. MTI reserves the right to make any product changes without notice. The MTI brand and Bear logo design are U.S. registered trademarks of MTI, Inc. 130-2519 Rev_v10 (09/19)

