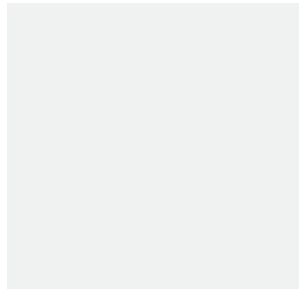




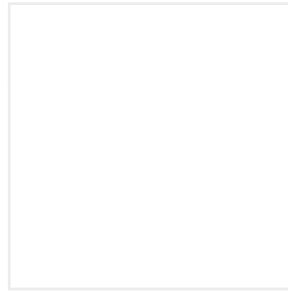
Counter Top Color Options¹



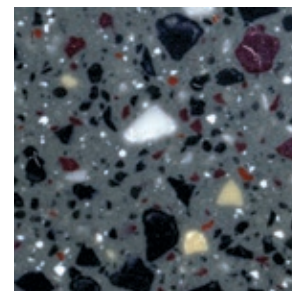
Crystal Laminate



Black Laminate

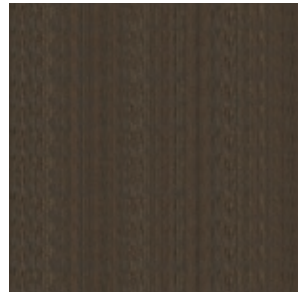


Frosty White Solid Surface²



Midnight Melange Solid Surface²

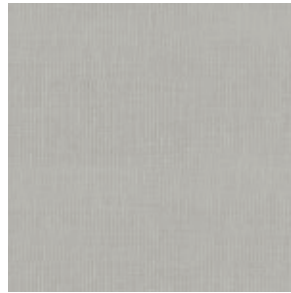
Door and Drawer Front Color Options¹



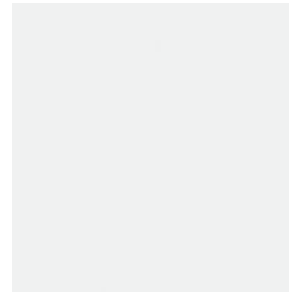
Xanadu³



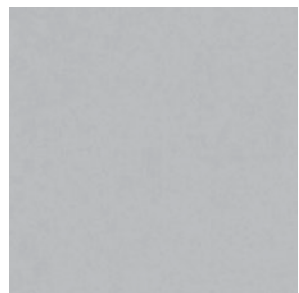
Low Line³



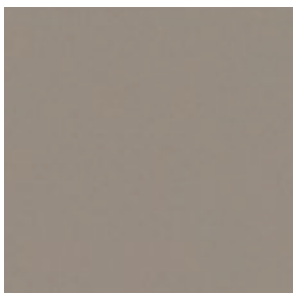
Classic Linen



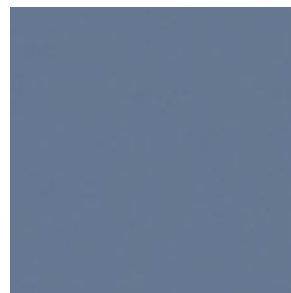
Crystal



Dove Grey



Shadow



Brittany Blue



Stainless Steel^{2,4}



Brush Finished Satin Nickel Handles



¹Due to screen colors and printing processes, actual colors will vary.

²Additional Charge Option

³Only available in Standard Depth cabinets. Includes cabinet sides and backwall

⁴Includes cabinet sides

Thoughtful construction and styling, and soft curves, combined with premium materials and contemporary ergonomic engineering.



Hand picked cabinet surfaces blend perfectly with all MTI chairs



Strength in Patient Care™